

Original Polycarbonate™ Tracing Template

For Metal Roof System Applications



Overview

Sno Gem's® Tracing Template is used to ensure proper placement of the Original Polycarbonate™ snow guard upon installation. **To be used in conjunction with all Original Polycarbonate™ snow guards installed with Surebond SB-190 and 3M VHB Tape.**

Dimensions

Outer Dimensions: 10" x 10"

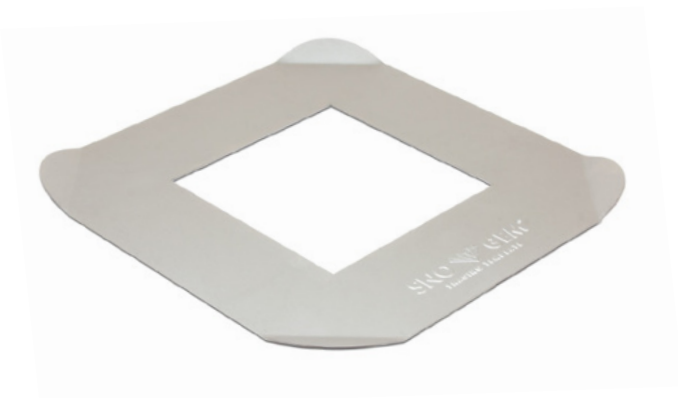
Inner Dimensions: 5" x 5"

Applications

- **Original Polycarbonate™ Snow Guard**

Material

22 ga. Galvanized Steel



*Seller assumes no responsibility for the warranty. Check your roof manufacturer's warranty information before installation.