

Retrofit Original Polycarbonate™ Sanding Template

For Metal Roof System Applications



Overview

The Sno Gem[®] sanding template is used to address blemishes or imperfections to the metal panel from the previously installed snow guard, and prior to installation of the Sno Gem Retrofit Original Polycarbonate™.

Dimensions

Outer Dimensions: 10" x 10"

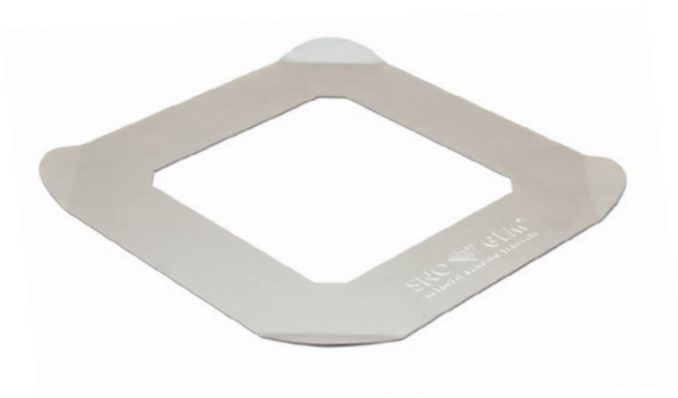
Inner Dimensions: 6" x 6"

Applications

- **Retrofit Original Polycarbonate™ Snow Guard**

Material

22 ga. Galvanized Steel



*Seller assumes no responsibility for the warranty. Check your roof manufacturer's warranty information before installation.