

Pre-Tin Original Metal™ Snow Guard

For Solder Applications



Copper Material Shown

Overview

Formed after the Sno Gem® Original Polycarbonate, this prismatic design is available in the following specialty metals: copper, lead coated copper, Freedom Gray and zinc. Diagonal installation creates a 5" barrier for more coverage per unit on wider panels. **The Pre-Tin Original Metal™ is installed using a patented pre-tinned backing for soldering to the specialty metal roof systems listed above - simply clean and heat the roof system per the manufacturer's installation instructions.**

Applications

Factory Applied Pre-Tinned Soldering Application.

Dimensions

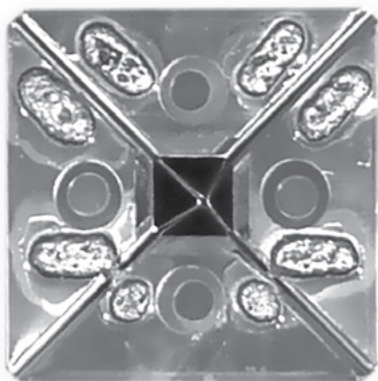
Height: 2 1/2" - Width: 3 1/2" - Length: 3 1/2"

Materials

Copper, Lead Coated Copper, Freedom Gray & Zinc.

Recommended Tool for Installation

Pre-Tinned soldering tool designed to hold the snow guard in place while reducing heat transfer from the part to the installers hand while soldering.



Lead Coated Copper Material Shown



Zinc Material Shown

*Seller assumes no responsibility for the warranty. Check your roof manufacturer's warranty information before installation.