

## Original Metal™ Snow Guard

For Metal Roof Systems



Staggered Installation Option Shown



Copper Material Shown

### Overview

Formed after the Sno Gem® Original Polycarbonate, this prismatic design is available in any standard or custom pre-finished color and can be manufactured in any metal form, including: pre-finished aluminum or steel in Kynar 500 finish, stainless steel and galvalume. Diagonal installation creates a 5" barrier for more coverage per unit on wider panels. **The copper Original Metal™ is installed using pre-tinned backing for soldering to copper metal roof systems.**

### Applications

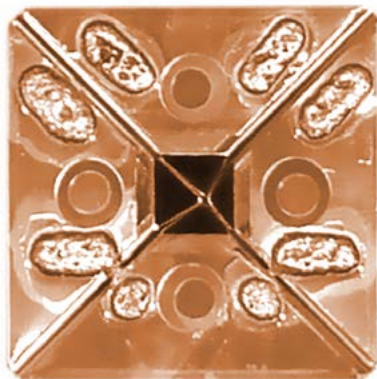
Pre-Tinned Soldering Application (not supplied by Sno Gem).

### Dimensions

Height: 2 1/2" - Width: 3 1/2" - Length: 3 1/2"

### Materials

Copper, Lead Coated Copper, Freedom Gray & Zinc.



Pre-Tin (not supplied by Sno Gem)



\*Seller assumes no responsibility for the warranty. Check your roof manufacturer's warranty information before installation.