

*** SNO GEM® PRODUCT CUT SHEET ***

NOTES:

1. FOR CLARITY THIS DRAWING IS NOT TO SCALE.
2. CONTACT THE MANUFACTURER FOR RECOMMENDED LAYOUTS, SPACING AND ADDITIONAL DETAILS.
3. INSTALLATION MUST BE COMPLETED WITH THE MANUFACTURERS WRITTEN SPECIFICATIONS AND INSTALLATION INSTRUCTIONS.
4. THESE DRAWINGS ARE SUBJECT TO CHANGE WITHOUT NOTICE.

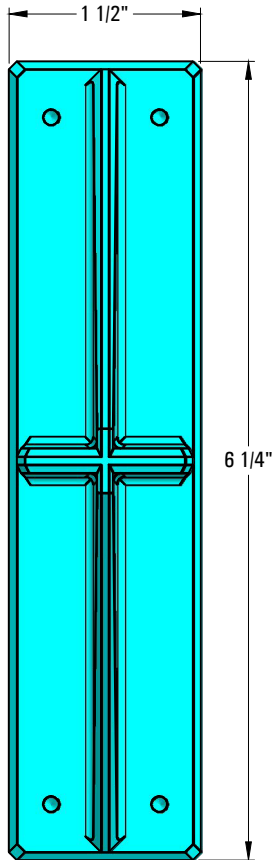
MATERIAL SELECTION

☐ POLYCARBONATE

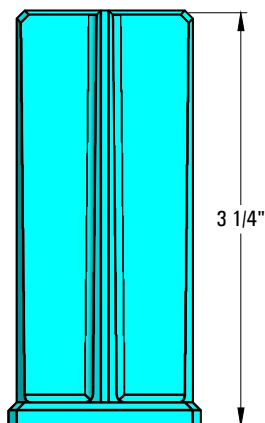
COLOR / FINISH SELECTION

☐ CLEAR

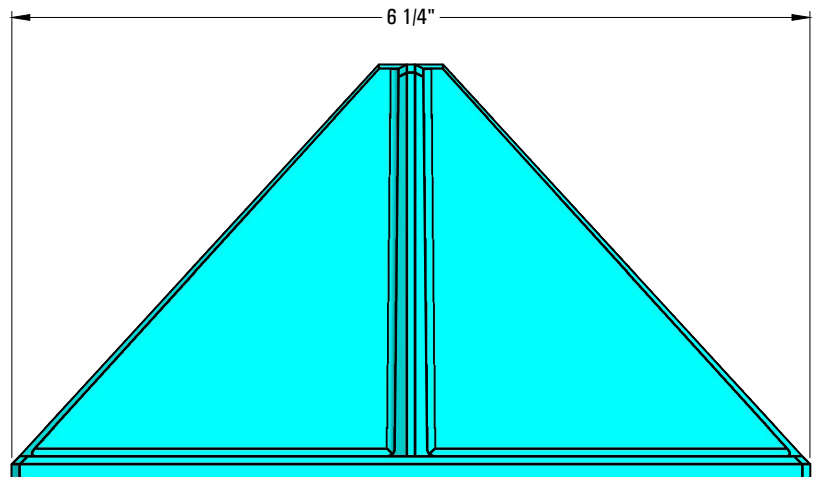
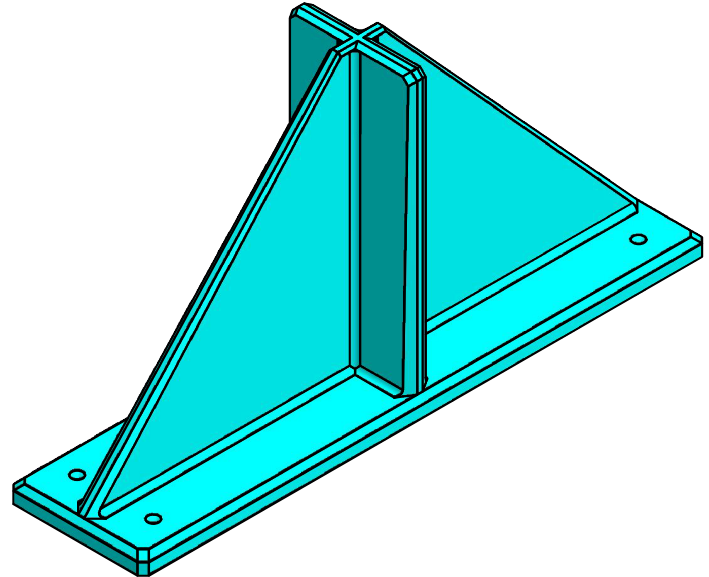
☐ COLOR TO CLOSELY MATCH



TOP VIEW



FRONT VIEW



RIGHT VIEW

SNO GEM®

Raising the Bar in Snow Retention

4800 METALMASTER WAY - McHENY, IL 60050

PHONE: 815.477.GEMS WEBSITE: WWW.SNOGEM.COM
FAX: 815.455.GEMS E-MAIL: INFO@SNOGEM.COM

1.5" JUNIOR POLYCARBONATE

DRAWN BY:	rhoeffleur	REV. #	DESCRIPTION
DATE:	11/22/2017		
SCALE:	N.T.S.		
THE INFORMATION HEREIN IS CONFIDENTIAL AND PROPRIETARY AND IS NOT TO BE DISCLOSED OR DELIVERED TO THIRD PARTIES WITHOUT THE PRIOR WRITTEN CONSENT OF SNO GEM, INC.			