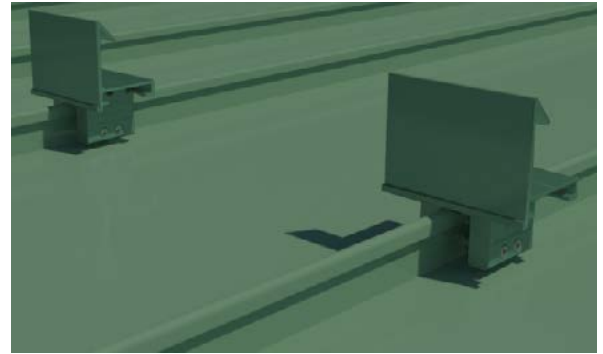


## 3" Individual Seam Mount Snow Guard

For Standing Seam Metal Roof Systems

- ❖ Aircraft-Grade Aluminum Extrusion
- ❖ Utilizes Patent-Pending WaveLock™ Technology
- ❖ Attach to Virtually Any Standing Seam Metal Roof
- ❖ Non-Penetrating Standing Seam Attachment
- ❖ Available in Multiple Sizes & Configurations
- ❖ Unparalleled Strength & Easy-to-Install
- ❖ No Painting Required
- ❖ Made in the USA



### Overview

Sno Gem's® Individual Seam Mount Snow Guard is a hybrid clamp-to-seam attachment that utilizes the 1" Sno Cube with a 4" piece of iBeam™ and pre-finished metal trim and is the roofing industry's first system to offer 3 full inches of vertical coverage without the use of multiple bars/fences. The Individual Seam Mount Snow Guard is available in multiple sizes and configurations that can attach to most standing seam profiles and provides unparalleled strength using patent-pending WaveLock™ Technology with 3 points of attachment. Offering ease of installation, Sno Gem's® Silver Bullet™ set screws include a rounded bullet tip to maximize strength and won't damage the paint finish or pierce the seam. Additionally, the Individual Seam Mount Snow Guard system comes in standard mill finish aluminum material, making it an item you can easily keep in stock when the need arises. Once installed, it only takes seconds to attach the pre-finished metal trim from the material that was used to install the panels (not included) onto the face of the iBeam™ to have an aesthetically pleasing and effective snow retention system that matches your standing seam roof system.

For additional details, technical questions, or to get an estimate, visit [snogem.com](http://snogem.com) or call 888-SNO-GEMS.

### HD Clamps



All Sno Cubes™ also available in HD (Heavy Duty) with 5 set screws for heavy snow load applications.

Sno Cube™ HD

### Full Line of Sno Cubes™ for Various Standing Seam Profiles



Sno Cube™



Sno Cube™ Mini



Sno Cube™ KLOC



Sno Cube™ KLOC Mini



Sno Cube™ Wide

\*Seller assumes no responsibility for the warranty. Check your roof manufacturer's warranty information before installation.