

1" Round Sno Blockade™ Snow Retention System

For Standing Seam Metal Roof Systems

- ◆ Aircraft-Grade Aluminum Extrusion
- ◆ Utilizes Patent-Pending WaveLock™ Technology
- ◆ Attach to Virtually Any Standing Seam Profile
- ◆ Unparalleled Strength & Easy-to-Install
- ◆ Non-Penetrating Seam Attachment
- ◆ Standard & Premium Finish Options Available
- ◆ Blockade Plate™ for Sliding Snow & Ice
- ◆ Made in the USA



Typical 1" Round Sno Blockade™ Assembly

Overview

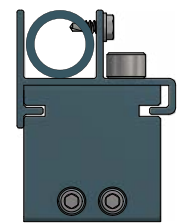
Making its debut in 2014, Sno Gem® is proud to announce the launch of the 1" Round Bar Sno Blockade™ system to our line of innovative snow retention systems. The Sno Blockade™ system is available in standard mill finish aluminum or painted in either a powder coating or Kynar finish. It is easy to install with few required components, regardless of whether installed on a new or existing standing seam metal roof system. The Sno Blockade™ system's unparalleled strength is derived from the unique design of the patent-pending WaveLock™ Technology with 3 points of attachment and is designed to maximize strength, but not to pierce or penetrate the roof panel.

For additional details, engineered layouts (if desired), technical questions, or to get an estimate, visit snogem.com or call 888-SNO-GEMS.

Full Line of Sno Blockade™ Cubes for Various Standing Seam Profiles

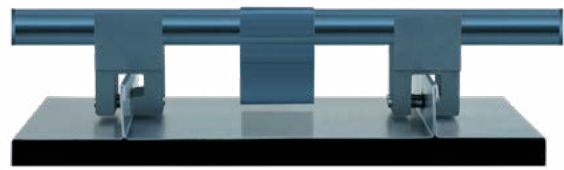


Side Profile



1" Bar System

Front View



Blockade™ Plate Shown

HD Clamps



All Sno Blockade™ cubes also available in HD (Heavy Duty) with 5 set screws for heavy snow load applications.

1" Sno Blockade™ Shown

*Seller assumes no responsibility for the warranty. Check your roof manufacturer's warranty information before installation.