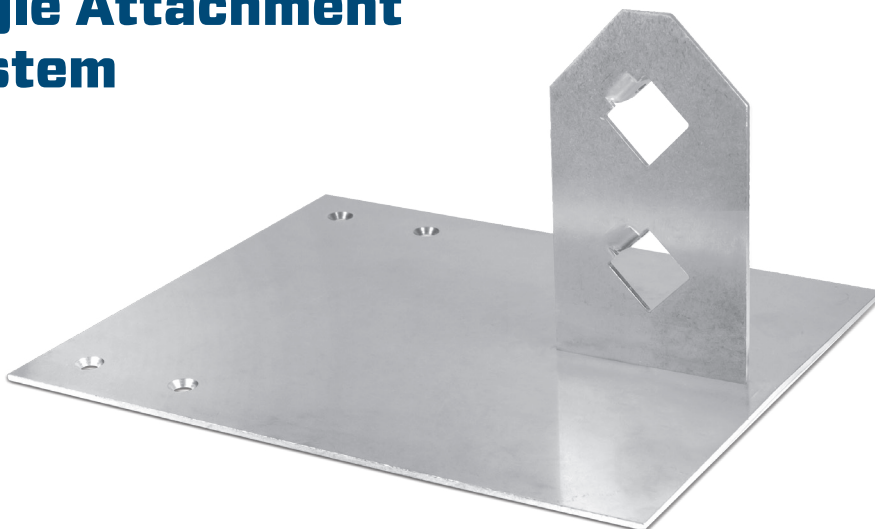


# Slate, Tile and Shingle Attachment Deck Mount Bar System



\*2" Double Retention Bar Shown

## Overview

Base plate can be customized for slate, tile, and shingle roofing systems, available in a 1" or 2" retention bar, using either a single, double, or triple bar support.

## Custom Configurations

Each Sno Barricade Deck Mount Bar System offers a wide variety of roofing system attachments that are mechanically fastened to the roof's deck, available in either a single, double, or triple bar support using either a 1" or 2" retention bar.

## Applications

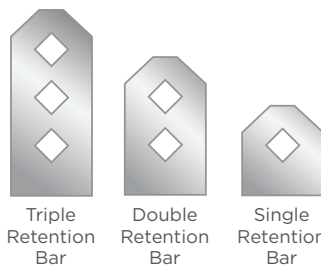
For Slate, Tile and Shingle Roofs.

## Colors

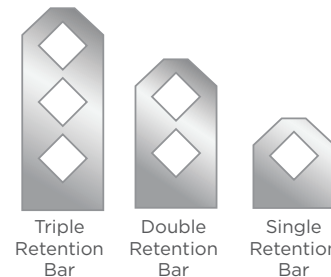
Standard or Custom Colors Available in Powder Coating or Kynar and Manufactured in Aluminum, Stainless Steel, Copper or Brass.

## Options

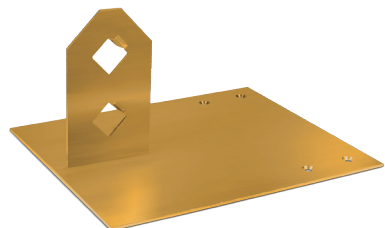
### 1" Retention Bar System



### 2" Retention Bar System



**Use Together With Our Barricade Plate That Stops Melting Ice & Snow From Sliding Underneath The Bar!**



\*Brass Model Shown